

Education For Employment Plan

PI26



E4E Plan Sections

- Mission and Goals
- Labor Market
- Family Engagement
- ACP Curriculum Support and Services
- Post-Secondary Education and Workforce Preparation
- Professional Development for Staff
- Community Partnerships
- Individualized ACP Support
- Access for all Students
- Current Progress and Goals
- ACP Software

Academic and Career Planning (ACP)

A student-driven, adult-supported process for creating unique visions for postsecondary success through self-exploration, career exploration, and planning skills.



KNOW Self-Awareness

KNOW their unique interests and abilities and how they are compatible with a multitude of opportunities.



EXPLORE Career Clusters & Pathways

EXPLORE labor statistics, education requirements, and work-based learning.



PLAN Career Planning

and maintain a Program of Study that provides flexibility based on individual experiences.



GO

Career Management

GO with confidence, re-evaluating, and returning to the process as needed.



What is ACP?

An ongoing process to engage students to develop self, create future vision, develop individual goals, and prepare a personal plan.



The ACP Product

Documents students' plan of coursework, career interests, post-secondary plans, goal setting, and qualifications.



Chapter PI-26

Wisconsin legislation requiring every school district to provide academic and career planning services to pupils enrolled in grades 6 through 12, beginning in the 2017-18 school year, to prepare them for future employment.

Mission & Vision Statement — Dodgeland School

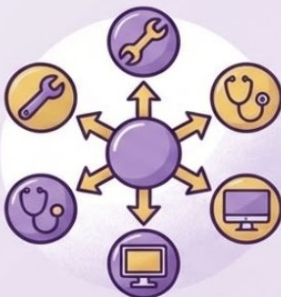


At Dodgeland School, our mission is to ensure academic excellence by empowering all students to achieve proficient and advanced performance, preparing them for future success through rigorous learning, innovative technology, and diverse opportunities.



We are committed to fostering a safe, respectful, and responsible environment that supports personal growth, while partnering with families and the community to nurture confident, capable, and future-ready learners.

Labor Market Information



JOB  CENTER
of WISCONSIN


careeronestop
PATHWAYS TO CAREER SUCCESS

 **Occupational
Outlook
HANDBOOK** 

Family Engagement



March 2026						
Sunday	Monday	Tuesday	Wednesday	Thursday	Friday	Saturday
1 No Scheduled Events	2 (District) 6:00PM - 7:00PM Read Across America Family Night	3 (District) 6:15PM - 7:15PM Dodgeland Youth Wrestling Club	4 No Scheduled Events	5 (District) 5:15PM - 7:15PM Dodgeland Youth Wrestling Club	6 (District) 5:30PM - 7:00PM Dodgeland Girl Scouts	7 No Scheduled Events
	(Softball - HS) 6:30PM - 7:30PM Softball: Varsity Player/Parent/Coach Meeting	(Basketball - HS Boys) 7:00PM - 9:00PM Basketball: Boys Varsity Regional		(District) 5:30PM - 6:30PM Soccer: Girls Varsity Player/Parent/Coach Meeting		

Dodgeland MS/HS Family Newsletter

March 2026

Hello Dodgeland Middle/High School Families and Happy February!

Do you believe that it is March already? The school year is flying by and before we know it, Spring Break will be here and soon after that Summer!

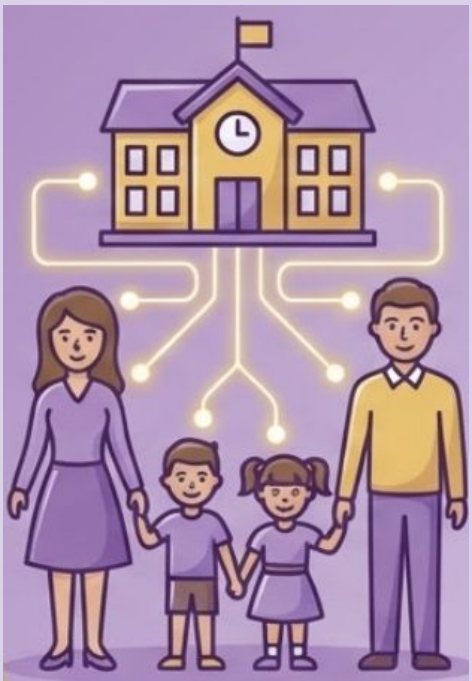
As we enter March, we also enter an important time of the school year: **testing season**. This month, our student bodies (grades 6-7) will be participating in multiple different tests including **Smarter, ACT, and iMCAAT**. These tests are important for our students to demonstrate their growth and help us as a district plan for the future. As families, please be sure to support your students as best as possible for testing by ensuring they:

- Get a good night of sleep
- Eat a healthy breakfast
- Take the testing seriously and do their best!

Winter sports will be not done, and we have had great seasons and great success stories; this time of year also brings another transition in the world of athletics as we start preparing for our **Spring Sports**. I encourage students to go out and try something new in the world of sports! Middle/High School are great times for students to try so many things as possible, and sports are just another way to get involved!

I hope you all have a great month as we push towards Spring Break! As we approach the upcoming assessment, please be sure to check out the Dodgeland Exchange email below for up to date information and be sure to reach out if you have any questions or concerns!

— Ms. Stevie
Work@msdpsd.net



ACP Curriculum Support and Services



6th Grade



xello Xello

- ♥ Add at least 5 interests
- 🧩 Career Matchmaker
- 📁 Save 3 Careers
- 📖 Lesson: Interests
- 🏫 Lesson: School Subjects at Work
- 🌐 Lesson: Decision Making
- 🏫 Getting Ready for Middle School
- 🛡️ Habitudes SEL



7th Grade



xello Xello

- 🧠 Learning Styles Quiz
- 🧩 Matchmaker Quiz
- 📁 Save 3 Careers
- 📍 Lesson: Explore Learning Styles
- 🌐 Lesson: Discover Learning Pathway
- ⚖️ Lesson: Biases and Career Choices
- 🛡️ Habitudes SEL



8th Grade



xello Xello

- 🧩 Matchmaker Quiz
- 📁 Save 3 Careers- Update Careers
- 📖 Lesson: Skills
- 🌐 Lesson: Explore Career Matches
- ♥ Save at least 5 interest
- 🏫 Lesson: Transition to High School
- 📅 Submit Schedule and 4 Year-Plan
- ⚙️ Gearing Up for High School
- 🛡️ Habitudes SEL

ACP Curriculum Support and Services

9th Grade

- Xello
- Portfolio 25-26
- Matchmaker
- Study Skills and Habits Lesson
- Personal Style Lesson
- Exploring Career Factors Lesson
- Getting Experience Lesson
- Goals and Plans
- Inspire WI Events
- MPTC Monthly Visits
- College Reps at Lunch
- Military Reps at Lunch
- SEL iLead

Progression
& Growth

10th Grade

- Xello
- Portfolio 25-26
- Matchmaker
- Work Values Lesson
- Career and Lifestyle Costs Lesson
- Workplace Skills and Attitudes Lesson
- Program Prospects Lesson
- Goals and Plans
- Sophomore Planning
- Conference/Sophomore Planning
- Inspire WI Events
- MPTC Monthly Visits
- College Reps at Lunch
- Military Reps at Lunch
- SEL iLead

ACP Curriculum Support and Services



11th Grade

- Xello
- Portfolio 25-26
- Matchmaker
- Work/Life Balance Lesson
- Choosing a College Lesson
- Career Demand Lesson
- Entrepreneurial Skills Lesson
- Goals and Plans
- Junior Planning Conference/Junior Planning
- Wisconsin Education Fair UW Oshkosh
- South Central WI Career Fair
- Inspire WI Events
- MPTC Monthly Visits
- College Reps at Lunch
- Military Reps at Lunch
- SEL iLead

Progress & Preparation



12th Grade

- Xello
- Portfolio 25-26
- Matchmaker
- Career Path Choices Lesson
- Job Interview Lesson
- Defining Success Lesson
- Career Backup Plans Lesson
- Goals and Plans
- College Goal WI
- Senior Planning Night/Senior Meetings
- Local Scholarship Applications
- South Central WI Career Fair
- Inspire WI Events
- MPTC Monthly Visits
- College Reps at Lunch
- Military Reps at Lunch
- SEL iLead



Post Secondary Education and Workforce Prep

Registration and Scheduling Process

Course Exploration

- Class meeting to discuss available course options
- Overview of graduation requirements and electives

Course Selection Support

- Small group or individual course selection meetings
- Guidance to help students choose courses aligned with their interests and goals

Informed Decision-Making

- Review student transcripts to monitor progress
- Use the [Academic and Career Planning Guide](#) to explore pathways

Schedule Review

- Final course schedules reviewed and adjusted as needed based on course availability

Family Communication

- All registration information shared with families
- Ensures students select courses aligned with their **academic plans and career goals**

Post Secondary Education and Workforce Prep

Post-Secondary Education Options

4-Year Universities

- [University of Wisconsin System](#)
- [Wisconsin Association of Independent Colleges and Universities \(WI Private Colleges\)](#)

[Technical College Pathways](#)

- Wisconsin Technical College System
- Career-focused programs
- Certificates, diplomas, and associate degrees

[Apprenticeships & Workforce Training](#)

- Wisconsin Department of Workforce Development Adult Apprenticeships
- Earn while you learn in high-demand careers

Apprenticeship Training Models

- [Local Apprenticeship Committees \(Union Programs\)](#)
- [Associated Builders and Contractors \(Non-Union Apprenticeships\)](#)

Professional Development for Staff

Teacher Externships



Immersion experiences in local industries for educators

MS/HS Inservice: Careers in our Community



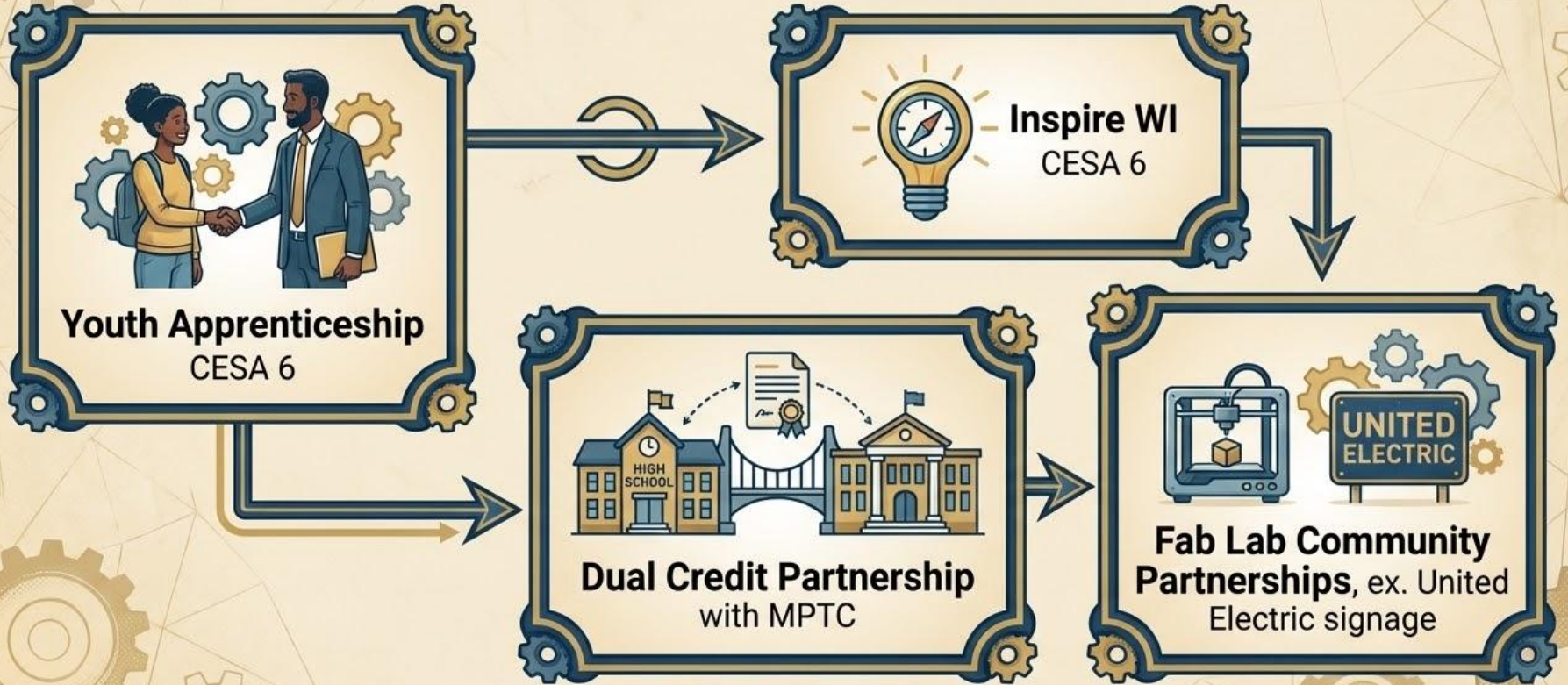
Collaborative sessions focused on local career pathways

Goal: WI Career Readiness Standards

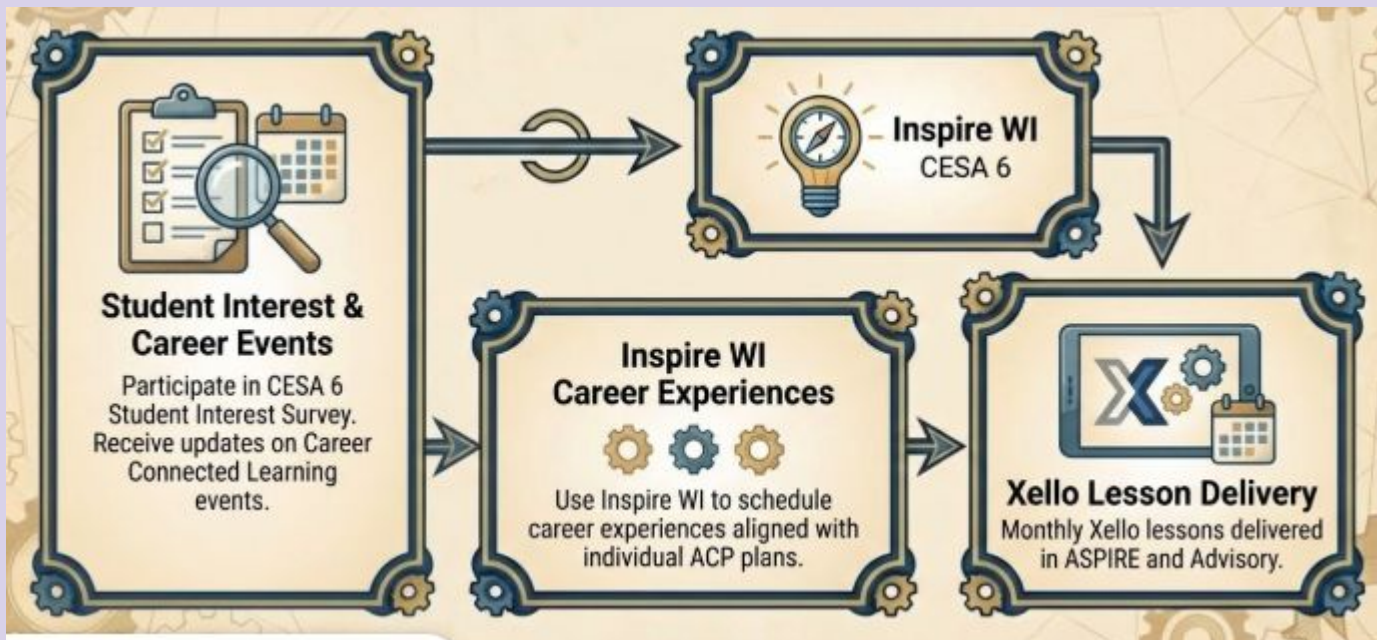


Integrating state standards into professional development

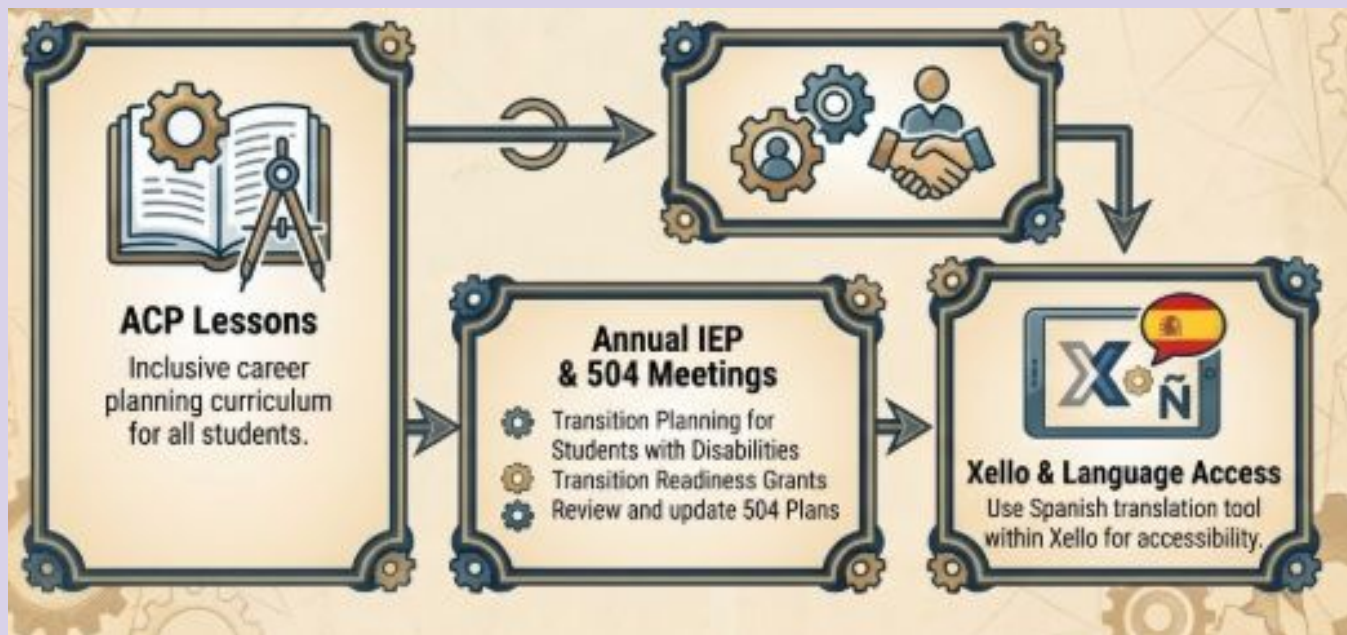
Community Partnerships



Individualized ACP Support



Access for All Students









Current Progress and Future Goals for Implementation





Career Exposure in Middle School

-  Career days
-  Guest speakers
-  Job exploration activities
-  Virtual career tours



Skills for Career Readiness in high school

-  Resume writing
-  Interview preparation

Have a graduation plan in place and review with advisor and family.

Access to ACP Software Tool

Students login through Classlink

ACP/E4E Plan



**Date
Approved**

April 27, 2026



**Website
Activation**

April 30, 2026